



PLEASE READ THE ENTIRE CONTENTS OF THIS MANUAL PRIOR TO INSTALLATION AND OPERATION. BY PROCEEDING YOU AGREE THAT YOU FULLY UNDERSTAND AND COMPREHEND THE FULL CONTENTS OF THIS MANUAL. FORWARD THIS MANUAL TO ALL OPERATORS. FAILURE TO OPERATE THIS EQUIPMENT AS DIRECTED MAY CAUSE INJURY OR DEATH.

REV A 08-01-09
p/n 5900144

INSTALLATION AND OPERATION MANUAL

Tire Test Tank

Model: RWS-55TD

VER A



SHIPPING DAMAGE CLAIMS

When this equipment is shipped, title passes to the purchaser upon receipt from the carrier. Consequently, claims for the material damaged in shipment must be made by the purchaser against the transportation company at the time shipment is received.

BE SAFE

Ranger™ Tire Test Tank are designed and built with safety in mind. However, proper training and thoughtful operation on the part of the operator can increase your overall safety. DO NOT operate or repair this equipment without reading this manual and the important safety instructions shown inside.



1645 Lemonwood Dr.
Santa Paula, CA. 93060, USA
Tel: 1-805-933-9970
Toll Free: 1-800-253-2363
Fax: 1-805-933-9160
www.rangerproducts.com

WARRANTY POLICY

Ranger Products™ are backed by over 35 years of manufacturing experience. Every Tire Test Tank bearing the Ranger™ name is sold with the following warranty.

- ◆ Each Ranger Product™ is warranted to be free from defects in workmanship and material for a period of one year from the date of shipment provided that a written claim for such defect is made within that time.
- ◆ This warranty does not cover damage or defects caused by carelessness of the operator, misuse, abuse or abnormal use which in any way impairs the proper functioning of the equipment or by the use or addition of parts not manufactured by Ranger Products™ or its suppliers.

THIS WARRANTY IS EXPRESSLY MADE IN LIEU OF ANY AND ALL OTHER WARRANTIES EXPRESSED OR IMPLIED INCLUDING THE WARRANTIES OF MERCHANTABILITY AND FITNESS FOR A PARTICULAR PURPOSE.

If your Ranger Products™ machine is not functioning properly, call your Ranger Products™ dealer immediately. On some occasions, an independent contractor may be hired to do the repairs. Within the warranty period, a customer should not hire his own contractor unless it is authorized in writing by Ranger Products™.

If it is necessary to return equipment for repairs, your dealer will so advise you. When returning equipment for repairs, see that machines are properly crated and protected, and prepay transportation.

Defective parts replaced at no charge must be returned to your dealer or Ranger Products™ within 60 days of the date that the replacement parts are shipped; otherwise, you must pay for the replacement parts at the current selling price.

SHIPPING DAMAGE

If any damage is found, notify your carrier immediately and save all packaging materials for the carrier's inspector to examine. Failure to promptly report damage could result in denial of your claim.

A trucking company's procedure for handling damage is as follows:

1. Immediately send out an inspector. An inspection report is filled out on the spot, a copy of which is given to the customer.
2. The **customer** has to call the carrier to request a claim form.
3. The customer mails in the claim form.
4. The claim usually takes two (2) months to process.

If a unit is seriously damaged, your Ranger Products dealer may be able to intervene, requesting that the damaged unit be returned and a new unit delivered.



IMPORTANT SAFETY TIPS

**ALWAYS MAINTAIN A CLEAN WORK AREA.
KEEP VISITORS AND ESPECIALLY
CHILDREN AWAY FROM WORK AREA.**

**THIS TIRE TEST TANK IS TO BE OPERATED BY
PROPERLY TRAINED PERSONNEL ONLY.
OPERATION BY UNTRAINED
PERSONNEL MAY RESULT IN INJURY
AND /OR PROPERTY DAMAGE.**

For Parts Or Service Contact:

**BendPak Inc. / Ranger Products
1645 Lemonwood Dr.
Santa Paula, CA. 93060
Tel: 1-805-933-9970
Toll Free: 1-800-253-2363
Fax: 1-805-933-9160
www.bendpak.com
www.rangerproducts.com**



THIS OPERATING MANUAL CONTAINS IMPORTANT DETAILS CONCERNING THE SAFE OPERATION OF THIS EQUIPMENT. THE USER MUST READ AND UNDERSTAND THESE DETAILS BEFORE ANY USE OF THE EQUIPMENT. THIS MANUAL MUST BE RETAINED FOR FUTURE REFERENCE.

OWNER/OPERATOR RESPONSIBILITY:

The owner and/or operator shall study the product instructions and retain them for future reference.

The owner and/or operator shall have an understanding of the product operating instructions and warnings before operating the equipment.

Warning information shall be emphasized and understood. If the operator is not fluent in English, the product instructions and warnings shall be read to and discussed with the operator in the operator's native language by the purchaser/ owner or his designee, making sure that the operator comprehends its contents.



INSPECTION

Visual inspection should be made before each use of the equipment. This inspection should check for abnormal conditions such as cracked welds, leaks, and damaged, loose or missing parts.

Any product that appears to be damaged in any way, is found to be worn or operated abnormally, must be removed from service immediately.

Any product that operates abnormally shall be removed from service until repaired by a qualified repair service center.

If the product is accidentally subjected to an abnormal load or shock, it must be taken out of service immediately and be inspected by a qualified repair or service center.

It is recommended that an annual inspection is performed on the equipment and that any damaged or worn parts, decals or warning labels be replaced with manufacturer's specified parts.



ALTERATIONS
Because of potential hazards associated with this type of equipment, no alterations shall be made to the product.



WARNING!

THIS IS A TIRE TEST TANK DEVICE ONLY. DO NOT EXCEED RATED CAPACITY.

OVERLOADING/ OVER HEATING CAN CAUSE DAMAGE TO OR FAILURE OF THE TIRE TEST TANK.

KEEP HANDS AND BODY CLEAR OF ALL PINCH POINTS.

NO ALTERATIONS TO THE TIRE TEST TANK SHALL BE MADE.

READ, STUDY AND UNDERSTAND THE OPERATING MANUAL PACKED WITH THIS EQUIPMENT BEFORE OPERATING.

ALWAYS WEAR APPROVED EYE PROTECTION DURING OPERATION.

FAILURE TO HEED THESE WARNINGS MAY RESULT IN DAMAGE TO THE EQUIPMENT, AND/OR FAILURE RESULTING IN PROPERTY DAMAGE, PERSONAL OR FATAL INJURY.



**DANGER!
DROWNING RISK**

KEEP SMALL CHILDREN AWAY FROM WATER TANKS. EVEN PARTIALLY FILLED TANKS PRESENT A DROWNING HAZARD

EQUIPMENT LOCATION

THIS EQUIPMENT SHOULD BE LOCATED ON A SOLID CONCRETE SURFACE ONLY.



DO NOT INSTALL OR USE THIS LIFT ON A SECOND / ELEVATED FLOOR WITHOUT FIRST CONSULTING BUILDING ARCHITECT.

UNPACKING EQUIPMENT

Carefully remove the crating and packing materials and all skid and pallet fasteners.

CAUTION:



Be careful when cutting steel banding material as items may become loose and fall causing personal harm or injury. Always wear gloves when uncrating the machine to prevent scratches, abrasions, or cuts due to the contact with packing materials. Remember to report any shipping damage to the carrier and make a notation on the delivery receipt.

ASSEMBLY INSTRUCTIONS

RWS-55TD Tire Test Tank

Refer to the Parts Breakdown on Page 6.

1. Bolt the Cylinder Support Saddle to the Tank using the Socket Head Cap Screws and Washers.
2. Bolt the upper part of the Left hand (taller) Restraint Weldment to the Tank on left hand side. (When facing the Cylinder side of the Tank.) Bolt the lower part to the Cylinder Support Saddle. Use Socket Head Cap Screws and Washers for both Restraints.
3. Bolt the upper part of Right Hand (shorter) Restraint Weldment to the Tank on right hand side. Bolt the lower part to the Cylinder Support Saddle. Use Socket Head Cap Screws and Washers for both Restraints.
4. Center the Locating Pin on the bottom of the Air Cylinder Assembly in the locating hole in the Cylinder Support Saddle.
5. Position the Cylinder Strap around the Air Cylinder and bolt to the upper rim of the Tank. Use Socket Head Cap Screws and Washers for the Cylinder Strap.
6. Bolt both the Left and Right Tire Support ramps to the Cylinder Support Saddle.
7. If pre-installed, remove the Socket Head Cap Screws and mount the Air Oil Regulator the side of the Tank.
8. Connect the 8mm Air Line to the One Touch Fitting on the Air/Oil Regulator.
9. Connect the shorter 6mm Air Line to the bottom One Touch Fitting on the Cylinder. Connect the longer 6mm Air Line to the upper One Touch Fitting on the Cylinder.
10. Check the Air line Connections on the Foot Valve Assembly.
11. Make sure the Drain Valve is in the Closed Position.
12. Connect an air source to the Air Oil Regulator. 90-150 psi (6-10 Bar) 10-25 CFM Air Requirement.
13. If desired bolt the Tank to the Concrete floor using the supplied Anchor Bolts.

OPERATING INSTRUCTIONS



DANGER!

If you detect any structural failure, stop using the Tire Test Tank immediately. Get a qualified technician to inspect it.

CAUTION!



Keep hands, fingers or feet and all parts of the body away from any moving parts.

1. Check the Operation of the lift running the Lift up and down and into the Tank prior to filling the Tank with Water



MAKE SURE THE DRAIN VALVE IS IN THE CLOSED POSITION.

NEVER FILL THE TEST TANK WITH ANY FLUID OTHER THAN WATER

2. Fill the tank with water to approximately 4" below the top of the Tank.
3. Lower the Tire Lift on outside of the tank to the lowest position.
4. Load an inflated tire onto the Tire Lift.
5. Raise the tire lift to the top position rotate the Tire Lift Assembly over the Tank by pressing on the Foot Pedal.
6. Lower the tire into the Tank.
7. Rotate the tire until the source of the leak is detected by looking for the air bubble stream.
8. Mark the location of the leak with a tire crayon.
9. Double check for additional leaks before removing the tire from the Tank.

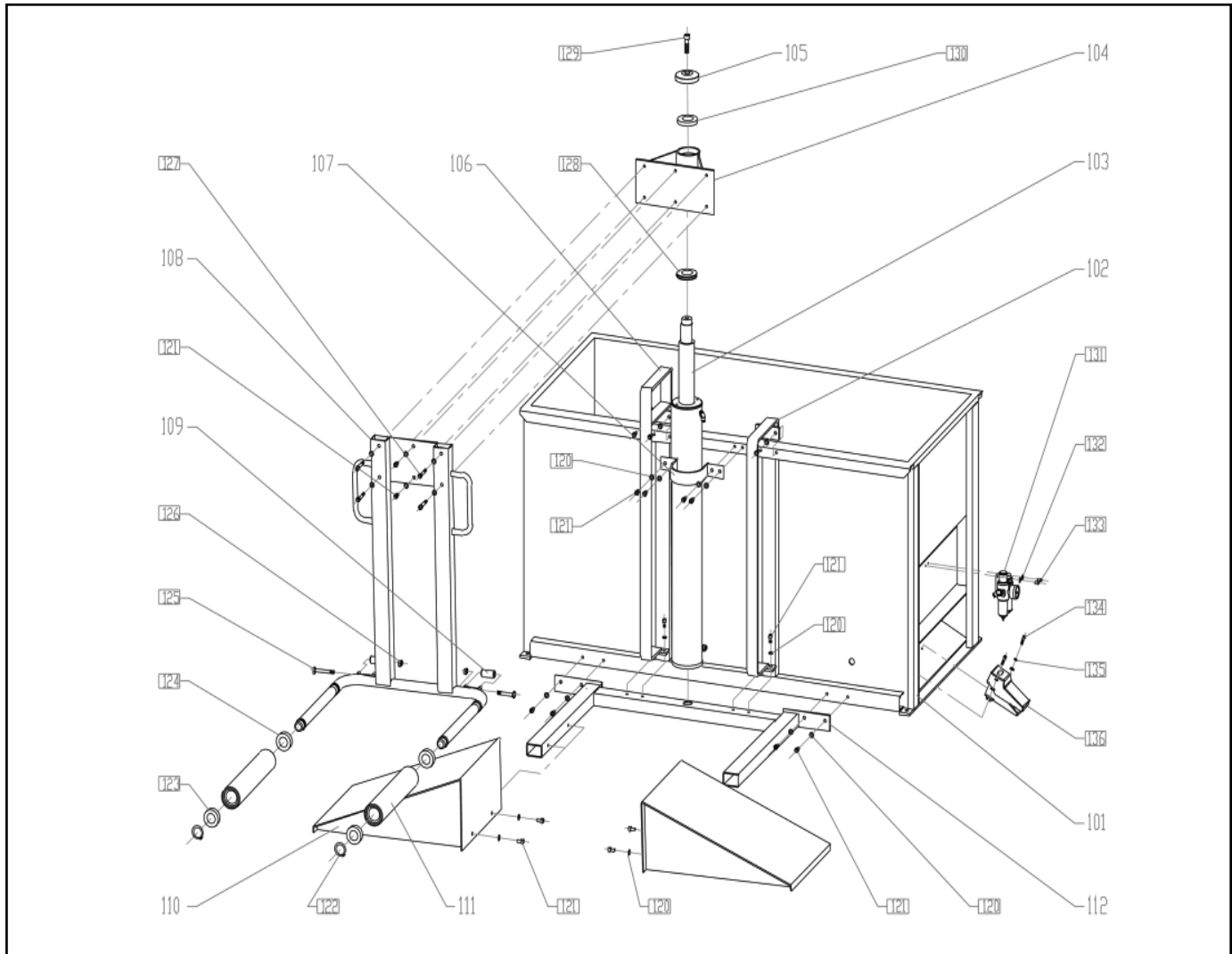
MAINTENANCE

1. Keep the Test Tank clean and free of debris and dirt.
2. All exposed machine surfaces of the Tire Test tank should be brushed clean and wiped with WD-40 or equivalent.
3. Check the oil level in Air / Oil Regulator. Oil should always be above the minimum level line.
4. Check the Water Collection Cup and empty as needed.
5. Periodically drain and refill the tank to prevent build up of contaminants and possible bacteria.
6. Clean the empty tank with a disinfecting cleaner or ten percent bleach solution if algae, mold or other contaminant is present. Dry the Tank completely before refilling with water.

SPECIFICATIONS

MODEL #	CAPACITY	DIMENSIONS	SHIPPING WEIGHT
RWS-55TD	500 Lbs / 227 Kg 68" / 173 mm Diameter	59" x 63" x 75" 1,500 mm x 1,600 mm x 1,900 mm	1,100 Lbs 499 Kg

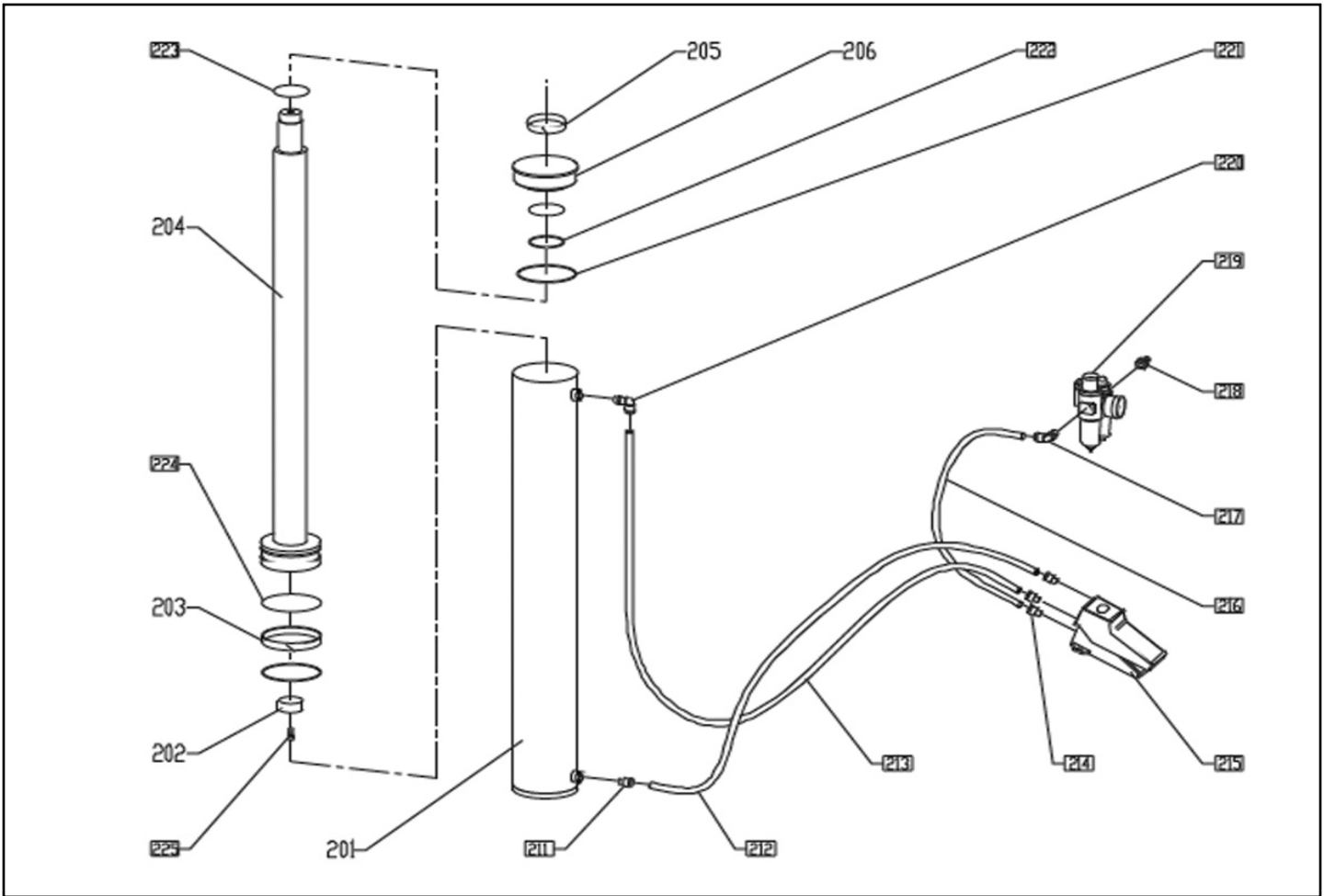
PARTS BREAKDOWN



No.	Name and Description	Qty
101	Tank Weldment	1
102	Restraints Weldment	11
103	Cylinder Assembly	1
104	Lift Head Weldment	1
105	Gland Bush	1
106	Restraints Weldment 2	1
107	Cylinder Strap	1
108	Tire Support Rack Weldment	1
109	Roller	2
110	Tire Support Ramp Weldment	2
111	Carrier Roller	2
112	Cylinder Support Saddle Weldment	1
120	Flat Washer 8	26
121	Socket Cap Screw M8×16	22
122	Circlip for Shaft 30mm	2

No.	Name and Description	Qty
123	Deep Groove Ball Bearing 6006	2
124	Socket Cap Screw 6907	2
125	Hexagon Head Bolt M10×70	2
126	Nyloc Nut M10	2
127	Hexagon Head Bolt M8×50	4
128	Single Direction Thrust Ball Bearing 51208	1
129	Socket Cap Screw M12×30	1
130	Socket Cap Screw 6207	1
131	Air Oil Regulator	1
132	Bracket (Big Plain Pad 5)	4
133	Socket Cap Screw M5×10	2
134	Socket Cap Screw M5×6	2
135	Spring Pad 5	2
136	Foot Valve Assembly 1	1

PNEUMATIC ASSEMBLY



No.	Name and Description	Qty
201	Cylinder Rod	1
202	Shock Pad	1
203	Guide Tape	1
204	Cylinder Rod	1
205	Guide Tap	1
206	Cylinder Head	1
207	n/a	-
208	n/a	-
209	n/a	-
210	n/a	-
211	One Touch Fitting 8-01	1
212	PU Hose Φ 8	1
213	PU Hose Φ 8	1

No.	Name and Description	Qty
214	One Touch Fitting 8-02	3
215	Two Five Foot Valve 4F210-08	1
216	PU Hose Φ 8	1
217	90° One Touch Fitting 8-02	1
218	Metal Quick Inserted Joints 12-02	1
219	Air / Oil Regulator	1
220	90° One Touch Fitting 8-01	1
221	O Ring 95×2.65	1
222	O Ring 54.5×2.65	2
223	O Ring 53×5.3	1
224	O Ring 100×5.7	2
225	Socket Cap Screw M6×16	1



The best automotive service equipment on the planet.

**For Parts Or Service
Contact:**

**BendPak Inc. / Ranger Products
1645 Lemonwood Dr.
Santa Paula, CA. 93060**

**Tel: 1-805-933-9970
Toll Free: 1-800-253-2363
Fax: 1-805-933-9160**

**www.bendpak.com
www.rangerproducts.com**

p/n 5900144

